

# IMAGINE ENGLISH

IMAGINE EDUCATION AUSTRALIA

2025





# STUDENT CONCENTS

04	<b>Welcome to Imagine English</b>
06	<b>Your Journey, Our Method</b>
10	<i>The Communicative approach</i>
12	<b>Pre Departure Program</b>
12	<b>Online English Test</b>
14	<b>Campus Location</b>
20	<b>Things to Do; Gold Coast</b>
24	<b>Things to Do; Brisbane</b>
28	<b>Student Services</b>
32	<i>Pathway Advice &amp; Activities</i>
34	<i>Airport Pick up &amp; Homestay</i>
36	<i>In-House Travel Agent</i>
38	<b>Courses</b>
40	<b>General English</b>
42	<i>Timetables</i>
44	<i>Course Levels</i>
46	<i>Elementary</i>
48	<i>Pre-Intermediate</i>
50	<i>Intermediate</i>
52	<i>Upper-intermediate</i>
54	<i>Advanced</i>
56	<b>IELTS Preparation</b>
58	<b>Clubs</b>
60	<b>Excursions</b>
62	<b>Pathway Options</b>
64	<b>Contact Us</b>



# WELCOME TO IMAGINE ENGLISH

At Imagine English, we know and understand how important it is to receive an English language education that is unique and tailored to you, our students. Through our careful commitment to understanding the growth of English language education over the years, we have developed an English language program that is unlike any other.

At Imagine English, our focus is on 'Your Journey' and 'Our Method'. By focusing on 'Your Journey', we understand that moving to a completely different country to learn English is no easy task. Although it is certainly exciting, we know it can also be scary. For many of you, it will be your first time living away from home, your family and your friends. It might also

be your first time traveling, living, studying and maybe even working abroad. We understand that by choosing to study abroad, you will not only learn English, you will experience and learn a new way of life. You will make new friends with people from all around the world, experience living with an Australian family or in a sharehouse, and explore a beautiful country with a culture that is different to your own. You might even feel homesick, or experience culture shock, but that's okay. We know that many of these valuable experiences happen outside the classroom, this is all part of 'Your Journey'.

With a focus on understanding 'Your Journey', Imagine English offers you to engage with 'Our Method'...

'Our Method' is specially developed to cater to the exciting twists and turns of your educational and living abroad journey. From years of experience in the education industry, we truly know all the excitement and challenges you may face as a student living away from home, and we are excited to support you! For you, as an Imagine English student, you are our number one priority, and we are dedicated to ensuring your amazing experience extends beyond just the classroom!

Our warm and friendly team at Imagine English will make you feel at home, while also making sure you have access to outstanding English education and advice to support your future study, visa or even travel endeavours.

# YOUR JOURNEY, OUR METHOD!

**At Imagine English, our students are our number one priority. Our focus is supporting and understanding your goals and motivations for learning English to create a personalized learning experience that inspires and helps you to achieve your goals. We provide you with the tools, experiences and opportunities needed to prepare you to use English in the real world. What-ever that may look like for you!**

**Our mission is to provide you with an experience that focuses on 'Your Journey'.**

We know your standards are high, and so are ours. At Imagine English we are passionate about ensuring our students excel and graduate from our programs with the language skills they desire. Our English language programs are designed to suit your journey, whether that is to meet conversational level proficiency, seek further academic pathways or future migration goals, we have the tools to help you reach your English language needs.

We promise to provide you with guidance and support because we know that learning a new language in a different country is both exciting, and maybe a little scary. By choosing to study with us you are taking your first step forward to an exciting future!

From all the team at Imagine English, we look forward to providing you with an exceptional English language learning experience and joining you on your journey!





## YOUR JOURNEY

**At Imagine English, you, our students are our number one priority! We are dedicated to providing you with an experience that focuses on 'Your Journey'. Focusing on 'Your Journey' means we know that studying overseas is a big deal and at Imagine English, we are privileged to support you along the way.**

'Your Journey' encompasses a learning journey that extends beyond the classroom, because by living and studying abroad, you will learn more than English. You will learn valuable life skills such as adaptability, resilience and broaden your cultural knowledge all at the same time. You will experience many exciting changes such as adjusting to a new school, a new living situation, a new part-time job and making new friends and lasting relationships!

'Your Journey' is exciting, but we understand it can also be daunting to leave your home, friends and family to start a new life. With the 'Our Method' philosophy at Imagine English, we can assure you that 'Your Journey' will be nothing short of amazing.

## OUR METHOD

**With 'Our Method', we are passionate about understanding and supporting you throughout all the stages of 'Your Journey'. 'Our Method' involves inviting you to enjoy a unique classroom experience with passionate teachers, modern technology and dynamic learning activities that teaches you English skills you can take into the real world!**

'Our Method' approach understands that outside of our tailor-made classes you will continue to learn English and invaluable life skills! With our approach, you will use the skills learned in our classes as you immerse yourself in Australian culture. You will use English to complete every-day activities, such as ordering your daily coffee, making new friends, and exploring. You will feel supported to use English to take on big steps, such as looking for part-time work, seeking further study pathways and understanding your visa and migration options!

Our mission is to provide you with the tools and opportunities to exceed your learning potential, both in and out of the classroom so that you can benefit from our programs long after you graduate.

With 'Our Method', you are destined to excel and achieve the most out of this experience leading you to an even brighter future!



## THE COMMUNICATIVE APPROACH

### *Our Method, Your Journey*

The Communicative Approach focuses on real world meaning and communication, allowing students to communicate accurately in a variety of contexts and based on their needs. The Communicative classroom involves lots of student talk time (STT) and reduced teacher talk time (TTT). It is not about lecturing the student, it's about giving the students as many opportunities to practice as possible. Your teacher should attempt to elicit

as much as possible from the students in order to increase engagement and facilitate understanding. All language skills are combined as often as possible to ensure balanced language learning.

The Communicative Approach is ideal for Imagine's multicultural classrooms. Students from some countries have traditionally learnt English based on grammar, spelling and writing. While this provides a strong base, it

can mean that many students have poor speaking and listening skills as a result. In other countries, fluency and getting meaning across take precedence. This builds confidence but means that many students don't have the grammatical knowledge to discuss deeper topics. The Communicative Approach combines grammatical accuracy with speaking fluency to cover all aspects of language learning.

### KEY FOCUS AREAS:

- » Focus on real communication and meaning, NOT just grammatical knowledge
- » Lots of Student Talk Time – Pairwork, Group Work
- » Combine skills as much as possible
- » Movement – No one wants to sit for 4 hours
- » Your Outcomes
- » Your Journey

# PRE DEPARTURE PROGRAM

**We are very excited to announce the launch of our Pre Departure Program for General English.**

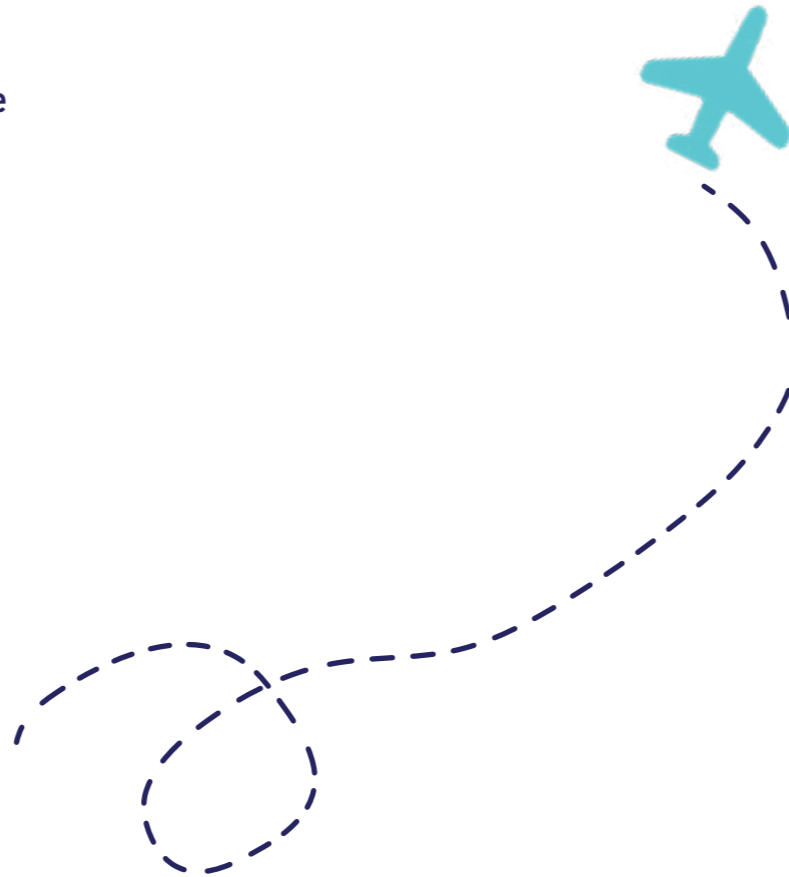
This program is designed to enhance and accelerate learning by allowing students to familiarise themselves with course content prior to arrival. They will also receive feedback which will give them more focus once they arrive in the classroom.

---

## ONLINE ENGLISH TEST

**With the world changing more and more towards online, we are very excited to announce the launch of our Online English test.**

Students will be able to complete the test on any device with results sent directly to our academic team for assessment.



### HOW IT WORKS.

1. Complete your Online English Test. This gives us an understanding of your current English ability and how we can best assist you with your language development.
2. You will receive feedback based on your Online English Test results. You will also be sent a Pre-Departure Pack to get you started on your English learning journey.
3. Completing the Pre-Departure Pack is the best way to prepare for your studies at Imagine Education as you will receive direct feedback from our teachers. It will also allow us to better understand your strengths and weaknesses so that we are better prepared to help you when you arrive in Australia.

# WHERE WE'RE LOCATED

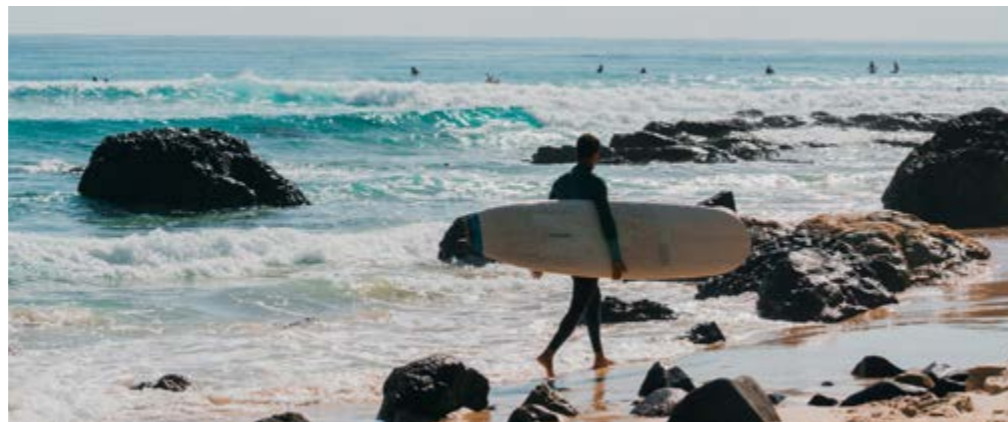
## GOLD COAST

Situated in the heart of the Gold Coast, studying with Imagine English truly provides you with a complete experience you won't find anywhere else!

There's no better way to immerse yourself in the Australian coastal lifestyle than studying right beside pristine beaches with endless coastlines.

This ideal campus location will have students finding themselves in awe viewing Australia's most beautiful beaches on their way to and from school.

Aside from world-famous beaches, the Gold Coast is home to some of the world's most beautiful rainforest's, waterfalls, and country landscapes. Students will be spoilt for choice when planning their weekend getaways!



## BRISBANE

In the heart of Queensland's famous capital city, our Brisbane campus offers a world of exciting experiences. There is nothing you can't do in Brisbane!

One advantage of living in Brisbane city is its rich diversity of cultures and regular cultural events.

You will feel transported to countries across the world through an abundance of different cultural food at your fingertips.

Studying in Brisbane city also puts you in the hub of world-class arts, activities and local theatre!

On weekends you can find yourself exploring the beautiful botanic gardens, enjoying live shows, or visiting the Queensland Art Gallery and Gallery of Modern Art – Australia's largest Gallery of Modern Art!









# THINGS TO DO: GOLD COAST

AUSTRALIA'S FAVOURITE PLAYGROUND

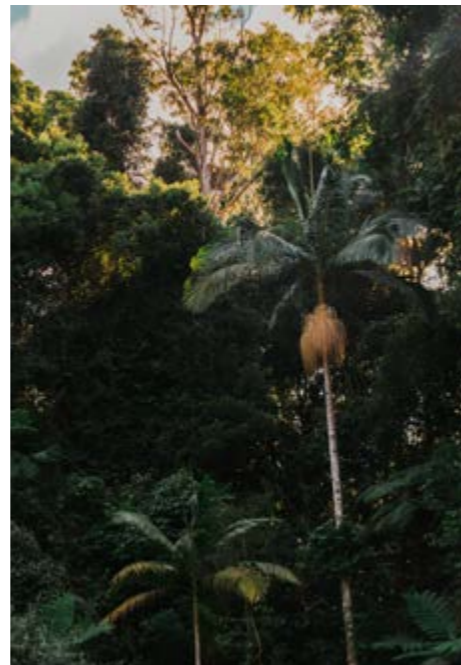
With an infinite selection of nature, nightlife, markets, events, restaurants and beautiful scenery, there's really nothing you can't do on the Gold Coast.



## Escape to the Hinterland

Take relaxing to another level and detox your body and mind at a day spa or retreat. Hang out with the wildlife at O'Reilly's Rainforest Retreat or become everything zen at Gwinganna. You'll leave feeling recharged and ready to go another round with the sports fans.

The Gold Coast has so many waterfalls! Check out Elabana Falls in Lamington National Park or hike out to Purling Brook Falls in Springbrook. Cool rainforest trails lead to curtains of misty magnificence.



## Selfie with Skippy!

Currumbin Wildlife Sanctuary is the Gold Coast's prime destination to get up close and cuddly with some of Australia's native animals. If you've ever wanted to get a selfie with a kangaroo like Taylor Swift then Currumbin Wildlife Sanctuary is the place to get your perfect shot!

## Horseback Adventures!

Located on a 2,500 acre working cattle property in the beautiful Gold Coast hinterland, Numinbah Valley Adventure Trails sees guests exploring the spectacular valley on horseback, stopping along the way for tea and damper – and those who wish to stay are treated to a unique glamping experience by Nerang River.

## Surfing with Dolphins!

Catch a wave with the most playful creatures in the ocean. Dolphins are often spotted dropping in on surfers, particularly when big swells hit the Gold Coast.

## Glow Worms!

Natural Bridge at Springbrook National Park is nature at its absolute best and a great place to see the famous Australian glow worms. Located within Springbrook National Park, Natural Bridge makes for a brilliant day trip, but it's after sunset that the natural rock formation really comes to life. Magical glow worms can be seen dotting the rock formation and on summer nights, luminous fireflies and fungi can also be seen.



## Snorkelling off Cook Island!

Just a short boat trip off the southern Gold Coast, Cook Island is perfect for divers and snorkelers of all experience levels.

## Whale Watching!

Each year from June to November around 20,000 humpback whales pass the iconic beaches of the Gold Coast along the Humpback Highway, bound for the warmer waters of North Queensland. There are some great onshore lookouts to admire these gentle giants from a distance. Or, if you're seeking a more intimate encounter with the largest living mammals on Earth, board a vessel for a tour!

Credit: Destination Gold Coast  
<https://www.destinationgoldcoast.com/>



### Bleach Festival!

Love circus, music, theatre, dance, cabaret and visual arts (who doesn't)? Well why not time your trip to coincide with the Coast's signature arts and cultural festival – Bleach\* – Bleach Festival occurs every March and shines a light on the incredible creativity and culture that lives here.

### 19 KAREN

The largest contemporary art gallery on the Coast, 19 Karen is a newfangled warehouse space displaying an impressive array of artworks, from innovative expressionistic pieces to brightly coloured pop art paintings, street art murals and more.

### Blues on BroadBeach

Are you into music? Or do you enjoy dancing every now and then? Well, you're in for a seriously good time at the annual Blues on Broadbeach – a three day street festival that transforms Broadbeach every May. Bust out your dancing shoes, warm up those vocal chords and add this event to your social calendar.

### HOTA - Home Of The Arts

The Coast's cultural heart beats at HOTA - a dedicated artistic precinct that brings the best live theatre, art exhibitions, indie films, stand up comedy and dance to the stage.

### Jellurgal

Step back in time and immerse yourself in one of Earth's oldest living civilizations as you discover the Coast's rich, Aboriginal heritage at Jellurgal Cultural Centre. Sample traditional bush tucker, be immersed in native song and dance and listen to Dreamtime stories of the Yugambeh people.

### The Craft Parlour

Do you love arts and crafts?! From Shibori tie-dyeing to extreme knitting, water colouring and naked cake decorating, this arts and craft studio is the perfect place to release your inner artist, learn some new skills while getting hands on and creative.

### Food Lover's Guide

#### Breakfast

##### *Paddock Bakery*

Melting the mouths and hearts of Gold Coasters for a few years now, Paddock Bakery offers rustic avo, wood-fired muesli, famous dippy eggs and straight-from-the-oven baked treats.

#### Lunch

##### *The Collective*

The Collective offers an innovative way to dine. It's an all-round playground for the palate, with five kitchens serving up American, Italian, Mexican, Asian and contemporary Australian.

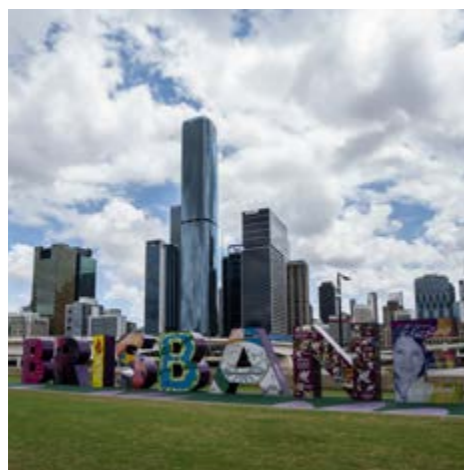
#### Dinner

##### *Tommy's Italian*

The new Italian eatery, located directly across from the ocean in Currumbin. Expect Italian delights; truffle-infused burrata, a grilled eggplant you'll never forget, Italian sausage rigatoni, perfect wood-fired pizzas and of course, Tommy's Tiramisu for dessert.

# THINGS TO DO: BRISBANE

Brisbane city is packed full of a variety of entertainment, adventures and activities, delicious eateries and social events. There is always something to do for everyone!



## EAT & DRINK

Food and drink is taken seriously in Brisbane – whether it’s a steak at a pub, a great coffee or a five-star degustation. Brisbane’s year-round outdoor climate and abundance of fresh produce offers menus which feature delicious locally sourced ingredients. From Moreton Bay prawns to greens from the Lockyer Valley, you’ll discover Queensland’s largest collection of Good Food Guide-awarded restaurants, cafes and bars in the region.



### Breakfast

*Paradise Cafe, Fortitude Valley*  
This minimalist but super trendy brunch spot is bringing a little slice of paradise to Alfred Street. With specialty coffee and divine food, it’s a win-win.

### Lunch

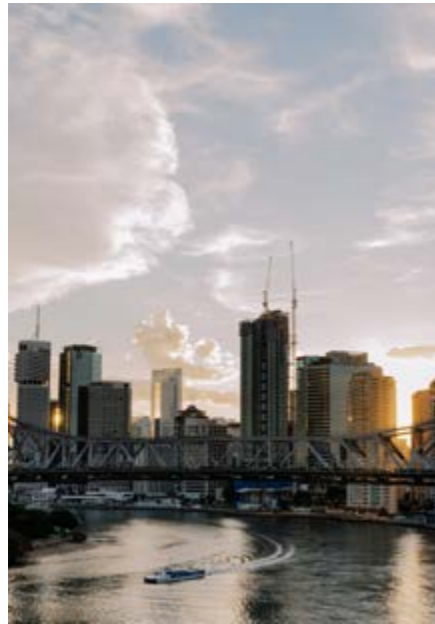
*Polpetta, Howard Smith Wharves*  
There is certainly no shortage of Italian deliciousness along the Wharves. Tucked underneath the Fantauzzo is this Italian gem, with pizzas and pastas you’ll dream about until you go back again!

### Dinner

*Gemelli Italian, Fortitude Valley*  
Italian brother-duo famous for their mouth-watering pizza and pastas, have opened their much-loved Gemelli Italian on the leafy James Street. With seven years of experience in the art of Italian dining, this expansion is one we are very happy to celebrate while savouring their 8-hour slow cooked ragu. Pass the wine!

## DISCOVER BRISBANE'S TOP MAJOR ATTRACTIONS

Australia's River City is full of unexpected surprises - and we've got the inside scoop. Whether you're here for a day, a week, an extended holiday or you're lucky enough to live locally, we've got a comprehensive guide to make sure you can tick off every iconic Brisbane experience, as well as some hidden gems. We're sure you'll be pleasantly surprised just how much our city has to offer.



### Cruise the Brisbane River

The iconic Brisbane River is the perfect backdrop to this city of lifestyle and leisure. Being on the water is one of the best ways to enjoy a Brisbane sightseeing adventure. Take the City-Cat to enjoy your tour!

### Queensland Art Gallery & the Gallery of Modern Art

At the top of South Bank, the Cultural Centre is home to Queensland's largest galleries and library and Australia's most popular museum. QAGOMA consists of the Queensland Art Gallery and the Gallery of Modern Art. The Queensland Art Gallery houses more traditional mediums and exhibitions while the Gallery of Modern Art is where modernism meets the abstract.

### Queensland Museum

The Queensland Museum is a museum of natural history, cultural heritage, science and human achievement that also tells the changing story of Queensland.

### Mt Coot-Tha

Mt Coot-tha offers more wonderful sunrise and sunset views. Stay after the sun goes down and watch the city lights and star-lit skies sparkle to life.

### Visit Southbank

South Bank is home to a whole precinct of activities and attractions perfect everyone. Located on the southern banks of the Brisbane River, the area is made up of lush parklands and Australia's only inner-city, man-made beach. This makes South Bank Parklands the perfect place for a dip in the pool, stroll in the park or a barbecue with friends.

### Shopping in the City

The Queen Street Mall is home to some of your favourite retailers and big international chains and luxury brands, while James Street in Fortitude Valley offers a leafy boutique and upscale experience.

### Farmers' markets

With unparalleled access to fertile regions all around, Brisbane's farmers and artisanal market scene is thriving.

### Sports

For sports, look straight to the two Brisbane stadiums. Suncorp Stadium, or Lang Park, mostly hosts the rugby (league and union) and soccer, while The Gabba is a cricket and AFL ground. Weekend sport is also happening all over the city in the smaller leagues - keep an eye out.

# STUDENT SERVICES

*All about you*

Our Student Services team provides student support with a difference! Whether *you* need advice adjusting to *your* new life in Australia, help with academic matters, timetable support, or even top tips or travel information, our friendly Student Services team are here to help *you!* They are passionate about supporting *you* and helping *you* get the most out of *your* experience.

## SOME OF OUR KEY SERVICES INCLUDE:

- » Orientation Day
- » Support for settling into life on the Gold Coast and/or Imagine English
- » Academic, accommodation and personal support
- » Advice for future study options and academic pathways
- » Student activities and local experiences
- » Job readiness support



# FREE STUDENT PACK AT ORIENTATION

## ORIENTATION DAY AT IMAGINE ENGLISH

**Imagine English welcomes students from all around the world. We know that moving to a new country is both exciting and scary and we are committed to ensuring your experience is nothing short of amazing.**

Orientation day at Imagine English signifies the beginning of your journey and we want this to be a fun, helpful and memorable experience.

That is why we have created an Orientation Day designed to kick-start your Australian experience!

Our Orientation Day includes a combination of social and academic activities aimed to introduce and

prepare you for studying at Imagine English and life on the Gold Coast and Brisbane. Starting students also receive a hand-picked essential Student Pack to give all new students on Orientation Day.





## QUALITY TEACHING

We source only the highest quality English teachers who are passionate about providing exceptional education, which makes Imagine English students stand out in a crowd. Our highly-educated English teachers paired with dynamic classes create the optimal environment for you to meet your English language goals. Our English programs are designed to have your individual goals at the forefront of our focus, all you need to do is be willing to learn!



## PRE-DEPARTURE PROGRAM

As a student-centred school, we have developed a pre-departure program to help us understand you better before you arrive. This is an optional task for starting students, however highly encouraged as it assists our academic team in developing your individualized learning program!



## STUDENT COMMON AREA

All Imagine English students are welcome to complimentary drinks in our student common area. Chat to your classmates while drinking a Milo, Australia's favourite chocolate milk!



## JOB CORNER

### Did you know?

If you hold a Student Visa you can work up to *40 hours each fortnight!*

If you hold a Working Holiday visa you can work part time while studying or full-time once your course ends!

At Imagine English we understand that for many students, work and study will become a way of life. Although many students come from varied professional backgrounds, the most popular jobs students get in Australia are within Hospitality and Tourism.

Looking for your first job is an exciting experience but the process can be confusing and stressful. Imagine English supports students with resume writing, applying for jobs, interview support and information on Australian work rights. So, if you are planning to work and need some help, come visit our Student Services team at Job Corner!

### Job Corner can help with:

- » Applying for a Tax File Number (TFN)
- » Applying for an ABN (Australian Business Number)
- » Understanding Australian fair trade working rights
- » Resume writing
- » Interview preparation
- » How to apply for jobs

### Reasons to work in Australia

Working is like an English lesson outside of the classroom! By commencing work during your studies, you are taking your classroom experience to the next level by practicing your English in the real-world!

Imagine English has 4 flexible study schedules; morning, afternoon, night, and condensed! Which means you can easily find a job to suit your schedule!

Develop valuable life-skills, become more independent and have money to travel!





## PATHWAY ADVICE

---

Once you finish your studies with us, your options for future study are unlimited! Because there are many different pathway options available, our team is here to help you understand your options and the different processes involved.

The friendly Imagine English team provides free assistance and support for students looking for pathways to colleges or universities. Our team can complete your enrolment with one of our selected partners (listed in Our Pathways).

(Please note: If the course you are interested in is not listed, let us know and we can assist you with finding a course that's right for you!).

## ACTIVITIES

---

At Imagine English we know that being a student in a new country should be more than just going to class! That's why we offer an exciting range of activities, events, and experiences for you to do while studying with us to help make sure your time with us is unforgettable!

Become immersed in the Australian culture with social activities and events which allow you to utilize your English skills and build lifelong friendships.

At Imagine English there is always something happening. Each week we have scheduled social activities which include activities such as:

- Pizza days
- Ten Pin Bowling
- Lawn Bowls
- Karaoke
- Conversation Club
- Cultural Days
- Regular visits from the Zoo with Australian animals

## AIRPORT PICK-UP

---

Imagine English offers an airport pick-up service by a trusted member of our team to transport you safely from the airport to your new home in Australia. For more details and to view our price list click [here](#).

For more details and to view our price list please contact our Student Services Department.

## HOMESTAY

---

For all students who are interested in living with another family and experiencing a different culture, we highly recommend you apply for a Homestay experience to kick-start your Australian journey!

Our Imagine English Homestay families are sure to provide you with both a cultural and English language experience that will give you memories to last a lifetime. We recommend staying 4 weeks with our Homestay families to ensure you get the most out of this experience. Living with a local family is the best way to help you get to know your new area, gain special 'local's knowledge', help you settle into life in Australia, and of course, improve your English!





## IN-HOUSE TRAVEL AGENT

**If you love travelling and exploring the world, we would love to help you! Whether you are interested in exploring the diverse landscapes of Australia, visiting some of Australia's neighbouring countries, or looking to make a quick trip back home during your study break, our fantastic in-house travel agent can make your travel dreams come true!**

Lauren is a professional travel advisor, with over 18 years experience in delivering uncompromising customer service.

With a degree in Travel Management and extensive travel experience that spans the globe, she has the ability to transform a complicated itinerary into a seamless journey to remember.

Lauren combines her expertise, her experience, and her connections to provide a specialist service over and above what you receive when you make a booking online.

She can tailor-make unique and authentic travel experiences that will elevate your journey to the next level.

Having a trusted Travel Advisor by your side has never been more important.

*For more information, please visit [reception](#).*

# COURSES

*Tailor-made English courses designed to give you a remarkable learning experience.*

**Through years of industry observation and consultation with our most important partners, you (our students), we have perfected a course structure that ensures you not only achieve your desired English language results, but you have some fun along the way too!**

We are certain that our carefully developed course structure will enable you to reach your desired English language proficiency, to prepare you for your future endeavours – whatever that may be!

**Our English language courses are fun and dynamic, and our student-centred approach provides you with the ultimate learning experience.**

Our highly qualified educators are skilled at creating a fun and interactive learning experience, where you can make meaningful connections in the classroom that transfer to functional English language skills you will use in real life.

By studying with us, you will be sure to love our vibrant classroom environment! You will feel motivated and inspired to learn with our energetic, dynamic classrooms and high-end technology designed to optimise your learning.

At Imagine English we believe that study-life balance is key. That's why our courses include 20-hours of dynamic classroom learning per week and no more. By receiving a maximum of 20-hours a week of quality education, you will spend more time immersing yourself in Australian culture and practicing your new English skills in the real-world!

## **Exclusive Course Selection**

As we value quality over quantity, Imagine English offers just two exclusively selected courses; General English. Unlike any other school, we believe that focusing on two courses is the key to enhancing your learning experience. Have a look at our course page for more information about our courses to find a course that's right for you.

## **Course Inclusions:**

- » 20-hours of class time per week (giving you the perfect study-life balance!)
- » Flexible 10-week study blocks with 2 textbooks per level
- » Complete access to course materials such as textbooks, homework books and online learning



# GENERAL ENGLISH

Is it your dream to improve your general English so that you can communicate with others in everyday life? Do you want to use English to make new friends or travel the world? Or maybe you want to be able to use English to live and work casually in an English-speaking country?

At Imagine English, we offer General English courses with a modern twist designed to get you talking and communicating in English at your desired level. You will gain skills across all four areas of language, including speaking, listening, reading, and writing. With our General English course, you will develop not only the English language skills, but also the confidence to communicate using English in a variety of different contexts!

The quality of our course content paired with our outstanding teaching team is what gives you the Imagine English advantage! Using carefully selected textbooks including 'Face to Face' and 'New English File', we have made sure that our course content is not only of the highest quality but practical and engaging too. As you progress through the course you will notice that our highly educated and passionate teachers specialise in each level. This makes our teachers experts in creating dynamic classroom activities that will ignite your learning maximizing your ability to reach your full potential!



## 20-hours of class time per week!

As English Education experts, we have discovered that 20 hours of face-to-face class time per week is the perfect number to ensure you reach your goals! By studying this set number of hours in class you will achieve the perfect study-life balance; giving you more time to immerse yourself in the language outside of class which is the key to unlocking your language potential!

## Flexible 10-week study blocks!

Through a student-centred approach, we really know that no student is the same. Some students may need more or less time in each level to achieve their goals, and that is okay! Our quality educators carefully monitor your progress weekly. So, although each level is 10 weeks, depending on what you need, the time you spend in each level may differ!

## 5 English levels!

Our dedication to seeing you succeed has led us to developing 5 innovative English levels.

# START DATE EVERY MONDAY

# TIMETABLES

Imagine English understands that our students each have a different journey with different life schedules. That's why we have developed three flexible class timetables adapted to suit you including Early Bird, or Night Owl schedules! Read below to learn more!



## MORNING (Early Bird)

Our Morning Early Bird session is ideal for those who wish to get your study done in the first part of the day, so that you can spend the rest of the day doing self-study, work, or immersing yourself in the culture!

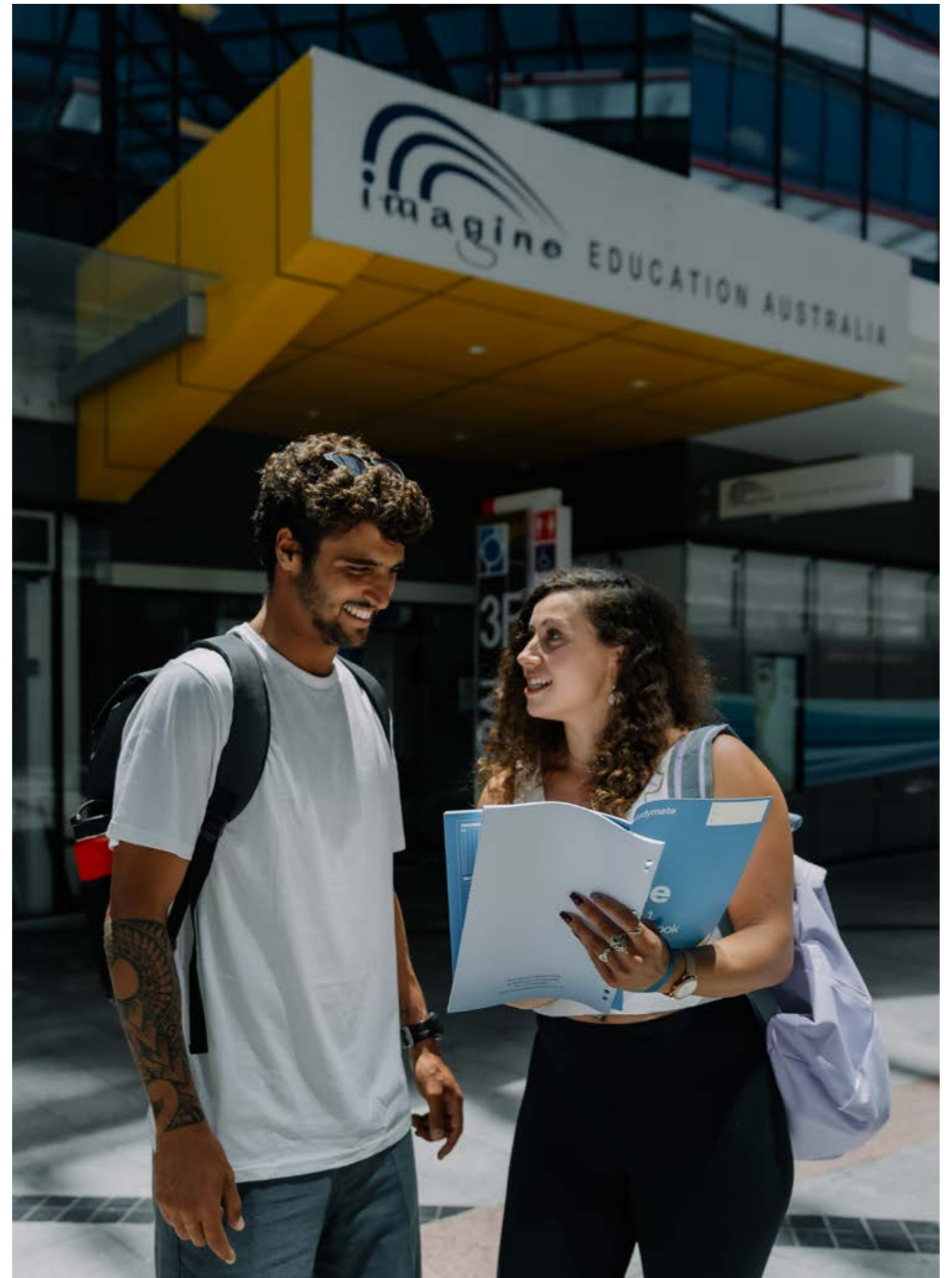
*Monday to Friday: 9:00am - 1:15pm*



## NIGHT (Night Owl)

Want to keep the day free for work or play? No worries! Our Night session offers all the benefits of the day classes but provides you with the option to spend the entire day however you like.

*Monday to Friday: 5:00pm - 9:15pm*



# COURSE LEVELS

If **your goal** is to venture into further study at a Vocational College or University, it's important to know that various study pathways require specific levels of English. Our English graph is a great way to help you understand the different English levels so that you can set your own learning goals and plan your transition into various course pathways.

ELEMENTARY  
PRE-INTERMEDIATE  
INTERMEDIATE  
UPPER INTERMEDIATE  
ADVANCED

## KEY LEVEL MILESTONES

### PRE-INTERMEDIATE

- » At Pre Intermediate level you are able to take part in casual conversations well, and have basic skills in reading, writing and understanding a variety of grammatical concepts. However, as your language skills are still developing, you still encounter some difficulties. At this stage you are not quite eligible to pathway onto further study, but you are certainly on your way!
- » If you haven't already, start planning your next step! Speak to our in-house Career Advisor to discuss your pathway options!

### INTERMEDIATE

- » Congratulations on reaching Intermediate level! You have worked hard to get here. Being at this level means you are just 10 weeks away from advancing to the next level, Upper Intermediate.
- » As an Intermediate level student your English skills allow you to communicate about a broader range of topics and share more than just your opinion! You are making less grammatical mistakes and are starting to understand colloquial English terms.
- » Achieving Intermediate level puts you one step closer to unlocking various study pathways. Now is a good time to consult with our Academic Advisor to plan your next steps.

### UPPER INTERMEDIATE

- » Making it to Upper Intermediate is no easy feat and you should be proud! At this level you are able to communicate about everyday topics and a variety of abstract topics with minimal grammatical and vocabulary errors.
- » Reaching Upper Intermediate means you have unlocked access to various further study options! You can now choose a pathway onto selected VET courses. You will still need to reach Advance level in order to unlock a broader variety of course options.
- » As always, our friendly in-house Career Advisor is here to support you if you are still unsure about future study options.

### ADVANCED

- » By Advanced level there is almost nothing you can't do! At this level you can use English to speak about a range of abstract topics with fluency and near to no grammatical errors!
- » Being at Advanced level means you will have seemingly endless options for future study! You now have access to pathways onto VET courses and Australian Universities, as well as opening doors for possible migration options.
- » Achieving Advanced level is an amazing achievement! It's now up to you to use your skills in the real world.



## LISTEN AND UNDERSTAND...

Students at this level build on the basic foundation developed in the Starter Level. Listening skills are still very limited but are slowly expanding to incorporate further information directly related to the individual and their daily life, including other people close to the student. Students at this level can now understand simple sentences but may still require some repetition on behalf of the speaker to ensure comprehension. Gestures and body language are still key to meaning and understanding but are required less. Periods of listening are still short – two or three minutes at most – and at this level, a few unknown words in a sentence are a large stumbling block to comprehension.



## SPEAK TO EXPRESS IDEAS ABOUT OR PARTICIPATE IN...

At this stage, students' speaking ability is still quite limited which may lead to frustration. This is because their listening comprehension is increasing faster than their speaking ability and so they are unable to express their ideas clearly. Students still express themselves in simple sentences about themselves, family or close friends, and often fall back to translation as a tool to participate in conversations. Pronunciation and sentence structure are still strongly influenced by the student's first language but pronunciation is improved and initial signs of fluency begin to emerge.



## READ TO COMPREHEND...

At this stage, students' reading comprehension is still limited to short texts directly related to their interests or needs. As with listening, students may get "stuck" on words they don't understand, causing reading to be a slow process interrupted by the need to work out the meaning of these unknown words or phrases. Reading is purely on "face value" comprehension with any indirect inferences being lost on the reader.



## WRITE...

At this stage, writing is still very basic and, similar to speaking, may lead to frustration due to the inability to express ideas. Writing will still involve direct translation from the student's first language, causing confusion and stress for the reader. With many students at this level, a gap begins to open between speaking and writing ability as the student gains more confidence in their oral abilities with writing, due its more difficult nature, lagging behind.



## VOCABULARY

Vocabulary at this stage is still limited to the student's immediate surroundings, interests and needs – family, food and drink, work and personal information – but is expanded upon to allow students to communicate in more detail. As previously mentioned, unknown vocabulary is still a major stumbling block and communication is broken while the student thinks about appropriate words to use or consults a translation tool.



## GRAMMAR

Grammar is still a big challenge for students at this level, and will continue to be so for quite some time. The grammar at this level is slightly more complex than at the previous level. The focus is still on structures that allow students to communicate about themselves and immediate contacts and also about immediate necessities, including the ability to ask questions in different contexts. Structures about the past, while still simple, become more prominent.





## LISTEN AND UNDERSTAND...

The Pre-Intermediate level, along with the Intermediate level, is the core foundation of English. If we were building a house, Starter and Elementary would be the clearing and smoothing of the ground whereas Pre-Intermediate and Intermediate would be the concrete foundation and core structure. Students at this level can understand longer listening texts but may still require some clarification on behalf of the speaker to ensure comprehension. Gestures and body language are generally not necessary except on occasion to assist clarification. Periods of listening are still relatively short – five minutes at most – but students can participate in a conversation about simple topics with little trouble.



## SPEAK TO EXPRESS IDEAS ABOUT OR PARTICIPATE IN...

Pre-Intermediate (along with Intermediate) is a very important stage when students begin to break away from reliance on their first language and start to become much more comfortable speaking in English. Listening comprehension is still more advanced than speaking ability but the gap is closing. Students can now express themselves in longer, more complex utterances about themselves, family or close friends, and start to express deeper ideas on society, global issues, etc. Translation is now used far less often. Pronunciation and sentence structure are still influenced by the student's first language but much less than previously. Pronunciation continues to improve and fluency increases dramatically compared to earlier stages.



## WRITE...

Writing is the weakest skill at this stage, with the possibility of frustration and reluctance to write from students due to its difficulty. Direct translation from the student's first language may still persist, leading to errors which in turn leads to frustration. Progress is occurring though, with students starting to write longer texts using a variety of times and tenses and the introduction of complex sentences.



## READ TO COMPREHEND...

Reading comprehension at this stage expands to longer, but still relatively simple, texts on a variety of topics. Unknown words and phrases still present obstacles to comprehension but less so than before. Reading is still based on direct comprehension with the beginnings of understanding inferences and "reading between the lines".



## VOCABULARY

Vocabulary begins to expand rapidly at this level. The acquisition of new structures and improved listening and reading comprehension allows students to learn new words in a variety of places and contexts, not just the classroom. This means students are exposed to and learning new vocabulary at a much quicker rate than before. Unknown vocabulary still presents an obstacle to communication but students have increasing ways to work around these obstacles and get meaning across in other ways with much less need for translation.



## GRAMMAR

As previously mentioned, this level (and the next) is the foundation for English. Students are challenged by a variety of new grammar structures which are necessary for more complex language comprehension and production. Students are starting to break away from reliance on their first language grammatical rules although interference and confusion may continue for some time.



## LISTEN AND UNDERSTAND...

The Intermediate level continues the development of the core foundation of English. In Intermediate, students are exposed to new, more complex language that builds on Pre-Intermediate. In this level, students can now participate relatively comfortably in conversations on a broad range of topics, although deeper, more complex topics may require clarification. Gestures and body language are rarely necessary. Periods of listening are longer – around ten minutes – depending on the topic.



## WRITE...

Writing still lags behind as the weakest skill at the Intermediate level, mainly because unlike speaking, meaning and understanding are communicated without the assistance of body language, facial expressions and context. Writing requires the writer to build the context and use words only to convey meaning. Also, errors are “permanent”, that is, they are unable to be changed or adjusted immediately as can be done when speaking. At this stage, direct translation from the student’s first language may still persist, but much less than before. Students write longer and more varied texts with more complex sentences, however, the large range of tenses and structures learnt can cause some confusion.



## GRAMMAR

Intermediate continues to add a lot of structures, building further on the foundation established in Pre-Intermediate. Students are introduced to further complex structures enabling them to use a variety of ways to express their ideas and experiences. Students are getting used to communicating in English at this stage and so there is much less reliance on their first language grammatical rules. Confusion now comes more from the multitude of English tenses and structures they are learning rather than from first language interference.



## SPEAK TO EXPRESS IDEAS ABOUT OR PARTICIPATE IN...

At the Intermediate level, students continue to break away from reliance on their first language and are much more comfortable speaking in English. Listening comprehension is only slightly more advanced than speaking ability and the gap is much closer. Students can now participate easily in conversations about their daily life, free time activities and so on, and can also express deeper ideas on society, global issues, etc. Translation is still used for unknown words but is no longer a crutch vital for conversation as it was before. Pronunciation is still influenced by the student’s first language as an accent but continues to improve. Fluency continues to increase dramatically with much less time required to think about which words and structures to use.



## READ TO COMPREHEND...

The broader range of vocabulary and structures introduced at this level allow students to read a much wider and more complex range of texts. Unknown words and phrases present minor obstacles to comprehension but students generally have strategies to deal with this by now. Students can now utilise direct comprehension along with some inferring and “reading between the lines”.



## VOCABULARY

Vocabulary continues to expand rapidly at the Intermediate level as student confidence grows. The world of English really starts to open up and new vocabulary comes from multiple contexts and situations. Unknown vocabulary presents a minor obstacle to communication that is removed by simple explanation by the speaker. Pronunciation of new vocabulary is also much easier due to the familiarity with the sounds of English.



## LISTEN AND UNDERSTAND...

At the Upper-Intermediate students have learned the core of the English language. From here, it is about adding bits and pieces, and continuous improvement on the way to becoming fluent. Many students finish their studies here as they feel they can now participate in society not just by merely surviving but by actually contributing through work, etc. In this level, students can now participate easily in conversations on a broad range of topics, including deeper, more complex topics. Gestures and body language are no longer necessary. Periods of listening are much longer –lectures, movies and TV programs, for example.



## SPEAK TO EXPRESS IDEAS ABOUT OR PARTICIPATE IN...

At the Upper-Intermediate level, students are now comfortable speaking in English with little to no reference to their first language. Listening comprehension and speaking ability are at a similar level and students can now participate easily in conversations on a range of topics including complex topics such as politics, society, global issues, etc. Unknown words are explored using English instead of translation and pronunciation is offset by accent only. Fluency continues to increase dramatically.



## WRITE...

Students at this stage generally move in one of two directions – continued study, usually for further academic reasons such as university or away from study and into work. Many students feel that their grasp of English is sufficient to live in an English-speaking country and therefore further study is not required. For these students, writing will always be the least developed skill. For those continuing with further academic study, writing becomes ever more important. At this stage, students write longer and more varied texts with a broad range of complex sentences. Errors at this stage are due to confusion with the type of structure to use rather than from first language interference.



## READ TO COMPREHEND...

At this level, students have the ability to read the vast majority of text types they may be exposed to on a daily basis, including magazine or blog articles and news stories. Unknown words and phrases are still found but present minor obstacles that are easily dealt with. Students can now utilise a variety of different reading strategies can engage with these texts. Exposure to authentic (real) reading material is very beneficial at this stage and helps not only with language expansion but also confidence.



## GRAMMAR

As previously mentioned, this level (and the next) is the foundation for English. Students are challenged by a variety of new grammar structures which are necessary for more complex language comprehension and production. Students are starting to break away from reliance on their first language grammatical rules although interference and confusion may continue for some time.



## VOCABULARY

Vocabulary begins to expand rapidly at this level. The acquisition of new structures and improved listening and reading comprehension allows students to learn new words in a variety of places and contexts, not just the classroom. This means students are exposed to and learning new vocabulary at a much quicker rate than before. Unknown vocabulary still presents an obstacle to communication but students have increasing ways to work around these obstacles and get meaning across in other ways with much less need for translation.



## LISTENING

The Advanced level is all about “polishing” the students’ English. The hard work has mostly been done and now it’s a matter of adding those little pieces that bring the student closer to native-like proficiency. Students at this level can participate in conversations on any topic except those outside of their knowledge or experience, much like native speakers. Various accents may cause difficulty – Scottish or Welsh for example – as they would for native speakers, and slang or technical jargon will also cause confusion. Periods of listening are also similar to that of native speakers – movies and TV programs, lectures and presentations for example.



## SPEAKING

Advanced level students are now very comfortable speaking English and feel very natural doing so. It is now “their” language, not a strange language that requires effort to use. Students can participate easily in conversations on any topic including complex topics such as politics, society, global issues, etc, much like native speakers. Unknown words are explored using English and pronunciation is moving towards near-native like fluency.



## VOCABULARY

Advanced level students are very confident communicating with the world in English and are now using it on a daily basis, either for work or study. New vocabulary continues to come from multiple sources, although unknown words are no longer common in daily speech. Unknown vocabulary that is encountered comes from further study or conversations, reading or watching something about an unfamiliar and complex topic. New vocabulary is dealt with in much the same way that native speakers deal with it, and as such, it presents minimal obstacles. Pronunciation of new vocabulary is similarly dealt with.



## WRITING

The Advanced level is all about “polishing” the students’ English. The hard work has mostly been done and now it’s a matter of adding those little pieces that bring the student closer to native-like proficiency. Students at this level can participate in conversations on any topic except those outside of their knowledge or experience, much like native speakers. Various accents For those students who continue on to the Advanced level, writing still presents a challenge but continues to improve quickly. Writing includes any type of text up to and including academic texts, depending on the individual student’s pathway, similar to native speakers. At this stage, students still have difficulties, however, these are more about structuring the various text types in the correct way rather than confusion with the actual language, may cause difficulty – Scottish or Welsh for example – as they would for native speakers, and slang or technical jargon will also cause confusion. Periods of listening are also similar to that of native speakers – movies and TV programs, lectures and presentations for example.



## READING

At this level, students have the ability to read any text type they may be exposed to, including magazine or blog articles, novels, news stories, and academic papers, depending on the field. Unknown words and phrases are still found but present minor obstacles that are easily dealt with in the same way that native speakers would. Students can utilise the same reading strategies that they would use in their own language. Exposure to authentic (real) reading material is still beneficial but now commonplace.



## GRAMMAR

As previously mentioned, Advanced is about “polishing” the language – adding extra pieces to improve clarity and complexity and increasing the students’ ability to express thoughts and ideas accurately. Students are comfortable with the structures of English at this stage, to the point where English may now occasionally interfere with their first language. There are still some additional structures being learned but this is more like painting the walls rather than building them, and they are adopted relatively quickly.

# IELTS PREPARATION

INTERNATIONAL ENGLISH LANGUAGE TESTING SYSTEM

**Are you ready to take your English language learning to the next level? Our IELTS (International English Language Testing System) course is available at our Southport Central Campus on the beautiful Gold Coast and at our Brisbane Campus in vibrant Brisbane City.**

This advanced academic English course is designed to prepare you for your IELTS examination. It is structured to give you the high-level English language learning necessary to gain the IELTS score needed for university, Vocational Education and Training (VET), or migration purposes. It is designed to improve your reading, writing, listening, and speaking skills and focuses on examination preparation. Our world-class trainers are dedicated to our students' success, and our modern classrooms are fully-equipped with the latest in interactive whiteboard technology.

Imagine is now a pre-testing centre for IELTS. This allows our students the opportunity to practice taking an IELTS exam using genuine questions under exam conditions. These tests are then marked by genuine examiners and students receive information on their performance. This helps both students and teachers know which areas they need practice in and gives students the experience and confidence to take the test. This is offered free to all our students.

- **Practice your IELTS exam** with real IELTS tests and get your marks back so you can see where you need to improve
- Gain the **advanced English language** skills needed to be successful in your IELTS exam
- **World-class teachers** who are dedicated to your success
- **Modern classrooms** equipped with the latest in interactive whiteboard technology
- **1-20 weeks** course length options

## TIMETABLE

### IELTS (Morning)

Get your practice in early to enjoy the rest of your day how you like. Subjects vary from each class day to ensure we cover every area of vocabulary, grammar, speech and listening skills.

*Monday to Friday: 8:00am - 1:30pm*



# CLUBS

One of the most exciting additions to our 2023 inclusion is a whole new look at Imagine Clubs.

We have added a wide range of new clubs that cater for every student throughout the year. These clubs allow students to practice their English in a friendly and relaxed environment, while also taking the opportunity to meet other students in different levels of English, and enhancing their overall experience of studying in Australia.



## English Karaoke

English Karaoke gives students the chance to practice their English in a cool and fun way. With students partaking in English Karaoke songs with each other, not only will they create new friendships and have an amazing time but they will also expand their English vocabulary at the same time.



## Debate Club

Debate club is the perfect opportunity for our students to show off their debating skills. This is a great opportunity for our students to practice their speaking skills as well as their ability to construct arguments in an analytic and educational way. This will be a fantastic club for our students who love to win an argument!



## Dance club

Dance club is a unique club that offers students the chance to show off their moves! This club is aimed for students of different cultures and backgrounds to come together and teach each other their own country's unique routines.



## Spelling Club

Spelling Club is a fun and exciting session students will spend competing against each other in Spelling games. This is a great opportunity for students to come together and compete against each other and show their superior spelling ability!



## Chess Club

Chess club at Imagine Education is all about inclusiveness and offering our students whether they are completely new to the game or high-level chess players, a place to be able to show off their skills against their peers as well as learn new strategies in the game of chess.



## Wellbeing

Wellbeing club is a chance for students to unwind from their week of studies with a wellbeing session. This will change from week to week and involves activities such as Yoga, Pilates, Breathwork, Icebaths etc.. This is a great opportunity for students to reflect on their week of studies and wind down with a session aimed at improving students' health both physically and mentally.



## Group Fitness (Football/ Basketball/Volleyball)

Our Group Fitness club is the place to be for our sports lovers. This club is revolved around physical activity and teamwork. Not only will this be a great time to unwind at the end of the week, but there will also be a strict English Only Policy during these games so that students can improve their English skills whilst in the middle of sports games and under pressure. This will help improve students' confidence rapidly.



## Arts & Crafts

Arts & Crafts club is a great opportunity for students to show their creative side. This club will involve students connecting with their inner Picasso! Students of all abilities can join this club and work towards creating artwork that will be displayed around the campus. Students will also be tasked with coming up with designs projects to help create themes for our cultural days!



## Cooking Club

Our cooking club gives students the opportunity to practice their cooking skills in a professional training kitchen located at our VET campuses. This is a great club for students looking to improve their basic skills in the kitchen, and also gives students the opportunity to experience possible future courses they might one day complete as we have many English students Pathway into Commercial Cookery courses.



## Job Club

Job club is the club to be in when first arriving in Australia. Within this club we have staff who will assist students in preparing to find a job within Australia. This will range from interview skills, preparing CVs, researching what jobs are available and much more. This is aimed to help students who are new to Australia gain the confidence they will need to go out and search for job opportunities. Imagine has also prepared for industry professionals to come in and speak with students about what Australian employers look for when hiring. Don't miss out!



## Poetry Club

Poetry club is something that will have our Poet's super excited as it gives them an opportunity to speak about, research and present some of their favourite poets work, as well as come up with their own Poetry. This is a great opportunity for students to not only expand their knowledge in Poetry but simultaneously practice all aspects of the English they have learned thus far.

# EXCURSIONS

Learning English is not just in the classroom. We have organised excursions for our students on a fortnightly basis. These excursions include visiting theme parks, going on nature trail hikes through the hinterlands, taking a day trip down to Byron Bay and much much more. Our English students will get the chance to attend these days at discounted prices and get to explore parts of Queensland they have never seen. Don't miss out!



## Seaworld

Sea World is a marine mammal park, oceanarium, and theme park located on the Gold Coast, Queensland, Australia. It includes rides, animal exhibits and other attractions, and it promotes conservation through education and the rescue and rehabilitation of sick, injured or orphaned wildlife.



## Dreamworld

Dreamworld is a theme park and zoo situated on the Gold Coast in Queensland. It is Australia's biggest theme park with over 40 rides and attractions. Attractions range from thrill rides such as The Claw and Pandamonium to family and kids attractions such as the Dreamworld Express and Sky Voyager.



## Movie World

Become lost in a world of fantasy and fun, meet your favourite Super Heroes and Super-Villains, and experience the exhilaration of world-class adventure rides and attractions at Warner Bros. Movie World.

Take on the tallest, longest and fastest HyperCoaster in the Southern Hemisphere or experience the action packed stunt show, Hollywood Stunt Driver 2! Catch the Star Parade where you can see all of your favourite stars and characters on Main Street. Experience Hollywood on the Gold Coast in true star style at Warner Bros. Movie World!



## Q1

Have you always wanted to visit the top of Australia's Tallest Building? SkyPoint Observation Deck offers panoramic views of the Gold Coast, 230m above sea level, located atop the iconic Q1 building in Surfers Paradise. SkyPoint's unique vantage point lets you take in views of the Gold Coast region including the golden beaches, city skyline, and lush green hinterland, all from one location.

If you are feeling a little more adventurous, conquer the SkyPoint Climb! This is Australia's highest external climb, starting on level 77 at SkyPoint Observation Deck. Following a Climb guide, participants will then walk up towards the eagles' nest located at the highest point of the Climb at around 270 metres above the ground.



## Byron Bay Day Trip

The day trip to Byron Bay is a great experience for any students and will include a walk up to the iconic lighthouse in Byron Bay, as well as exploring the beautiful lookouts and beaches that this small surf town has to offer.

# PATHWAYS OPTIONS

Australia boasts beautiful beaches, stunning landscapes, and a high quality of life. While you may discover endless places to go and things to do, you might just find yourself falling in love with Australia in a way that makes you want to stay.

If your dream is to build a life in Australia or even extend temporarily, you might like to consider extending your visa via pathways to a Vocational College or University.

## UNIVERSITIES

### GOLD COAST



Bond University



Griffith University



Southern Cross University

### BRISBANE



Australian Catholic University



Griffith University



Queensland University of Technology (QUT)



University of Queensland



University of Southern Queensland

## VET COLLEGES

### ENTREPRENEUR EDUCATION

One of the most exciting VET colleges in Australia offering high quality courses. Entrepreneur Education is a young college with a growing reputation. Located in the iconic Gold Coast, Entrepreneur Education offers a wide range of internationally recognised courses in:

- Design
- Entrepreneurship
- Business
- Leadership
- Marketing
- Commercial Cookery
- Photography
- Painting and Decorating
- Wall and Floor Tiling
- Health



### IMAGINE EDUCATION AUSTRALIA

Opening its doors in 2004, Imagine Education Australia is a popular choice for students, boasting some of the country's most diverse student populations and practical courses. Imagine Education offers accredited courses in:

- Child Care
- Commercial Cookery
- Hospitality
- Automotive
- Aged Care
- Business





# CONTACT US

## CONTACT US

---



@imagine\_education\_au



@imagineeducation



[www.imagineeducation.com.au](http://www.imagineeducation.com.au)



[info@imagineeducation.com.au](mailto:info@imagineeducation.com.au)

### GOLD COAST CAMPUS

Building 3F  
9 Lawson Street  
Southport  
QLD 4215

+617 55711122

### BRISBANE CAMPUS

Level 2  
170 Leichhardt Street  
Spring Hill  
QLD 4000

+617 55210595



# THANK YOU

## To our future students,

From all of us at Imagine English, we want to say Thank You for letting us be part of 'Your Journey'!

We know that with 'Our Method' you have made the right choice as we have set up the building blocks for your success. Even though moving to a new school in a new country is both exciting and scary, we want you to know that we are here to support you the entire way. You can rest assured that our passionate teachers, tailor-made English courses and commitment to you, our students, will have you feeling supported and prepared to take on new beginnings, exciting challenges and maximize your learning potential to reach your English language goals. A brighter future is literally just a plane ride away.

We can't wait to meet you!

From all of us, Imagine English Team.





SCAN ME

CRICOS PROVIDER NO. 02695C  
NATIONAL PROVIDER NO. 31302  
IMAGINE EDUCATION AUSTRALIA PTY LTD  
INVESTING IN IMAGINATIONS

